

Hitachi Compute Blade 320

Web Console Startup Guide

MK-99BDS320077-01



RMA0036027-D

□ **About trademarks and registered trademarks**

The trademarks and logos of Java and all the Java-related products are trademarks and registered trademarks of Sun Microsystems, Inc. in US and other countries.

Java stands for Java™.



□ **About copyright**

All the contents of this Startup Guide are protected by copyright. Reproducing in part or in whole this Startup Guide is strictly prohibited without prior permission.

Copyright© Hitachi, Ltd. 2007,2008, All rights reserved.

□ **About the Web console**

This console is provided with a function that allows you to operate easily the management module by using GUIs. This function is available only for GGX-BE9SVPM2, GGX-BE9SVPM2BX, GGX-BE9SVPU2A and GG-BE9SVPM2-Y.

□ **What you need in advance**

- Client PC (hereafter called the client)
- LAN cable (Use UTP-5 or higher.)

The following table shows the client's conditions:

Client Conditions

No.	Item	
1	Operating systems	Microsoft(R) Windows(R) Server 2003 R2, Standard Edition Microsoft(R) Windows(R) Server 2003 R2, Enterprise Edition Microsoft(R) Windows(R) Server 2003, Standard Edition Microsoft(R) Windows(R) Server 2003, Enterprise Edition Microsoft(R) Windows(R) XP Professional Microsoft(R) Windows(R) 2000 Professional Microsoft(R) Windows(R) Vista Business
2	Browser	Internet Explorer 6.0 or later

□ **Setting up the client**

Check for the settings of the client's browser before you use the Web console. If the settings are incorrect, the Web console will not operate normally. To use the Web console:

- Disable the Proxy server usage settings.
- Cancel the prohibition settings of popup menus.
- Enable JavaScript.

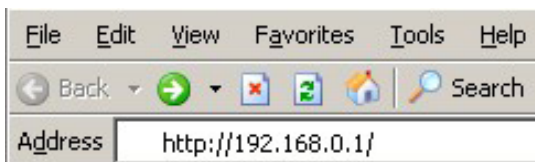
□ **Connecting to the system unit**

Connect the client to the system unit. To use the Web console, connect the MGMT0 management network port of the connector module to the client by using a LAN cable.

□ Logging in

1. Start the client's browser.
2. Enter "http://<IP address of a management module>: <port number>/" in the address bar. You can omit ":<port number>/" only when the port number is 80.

(Ex.) If the IP address of the management module is 192.168.0.1 and the port number is 80:



3. If a connection is made successfully, the following login screen appears on the browser.



Either "Hitachi Compute Blade" or "BladeSymphony" is displayed as the brand name in system operation screens.

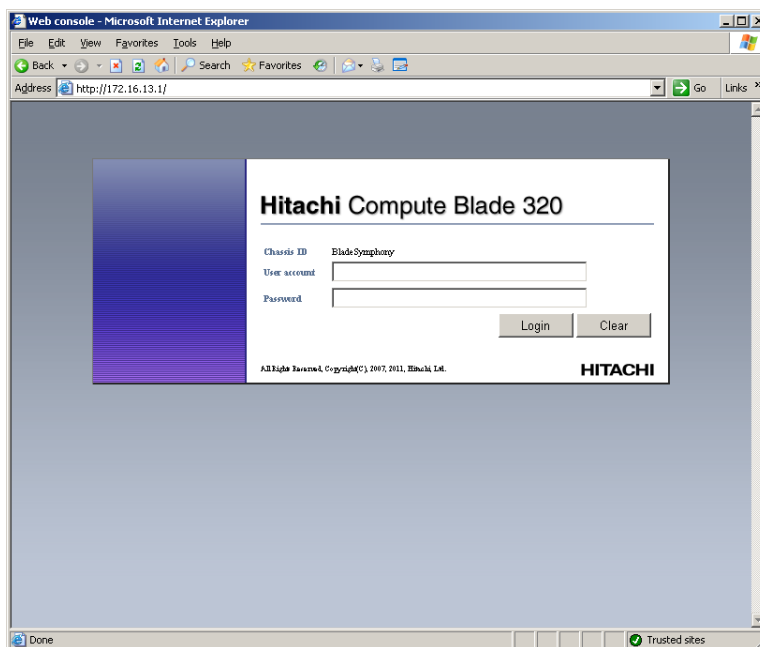


Figure Login Screen

- Enter the user account and password on the login screen.
When you log in initially, you have to enter the user account and password in their spaces. If the user authentication succeeds, the operation screen appears. On the operation screen, you can perform optional settings and display.

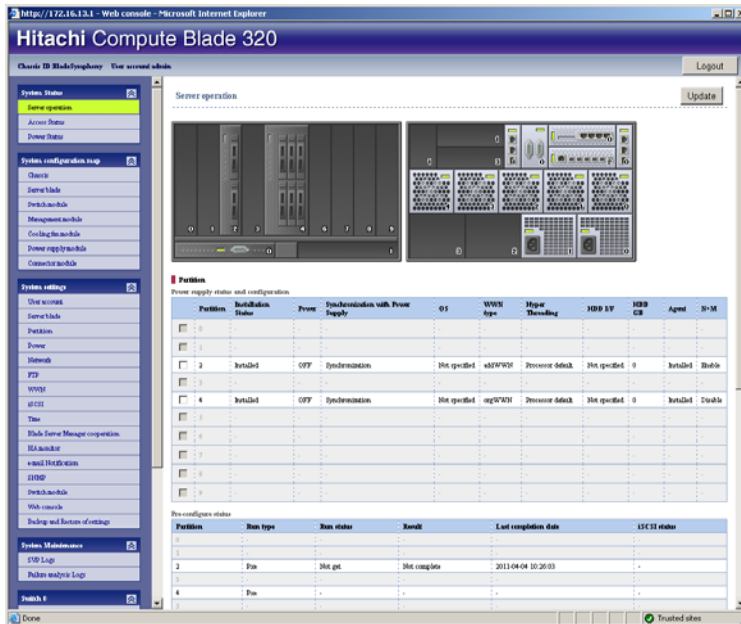


Figure Operation Screen

For further operations, refer to Chapter 6 of User's Guide, "Web Console."

